

C.ME

MONITOR ARM SYSTEM



ThinkingWorks™
By Thinking Ergonomix

C.ME

MONITOR ARM SYSTEM

The **C.ME** Monitor Arm is available in single, double, triple and quad arm configurations and has a range of standard finishes including white, black and polished aluminium.



BLACK Matte Black Arms, Black Post, Black Detailing

WHITE Gloss White Arms, Silver Post, White Detailing

POLISHED Polished Arms, Silver Post, Black Detailing



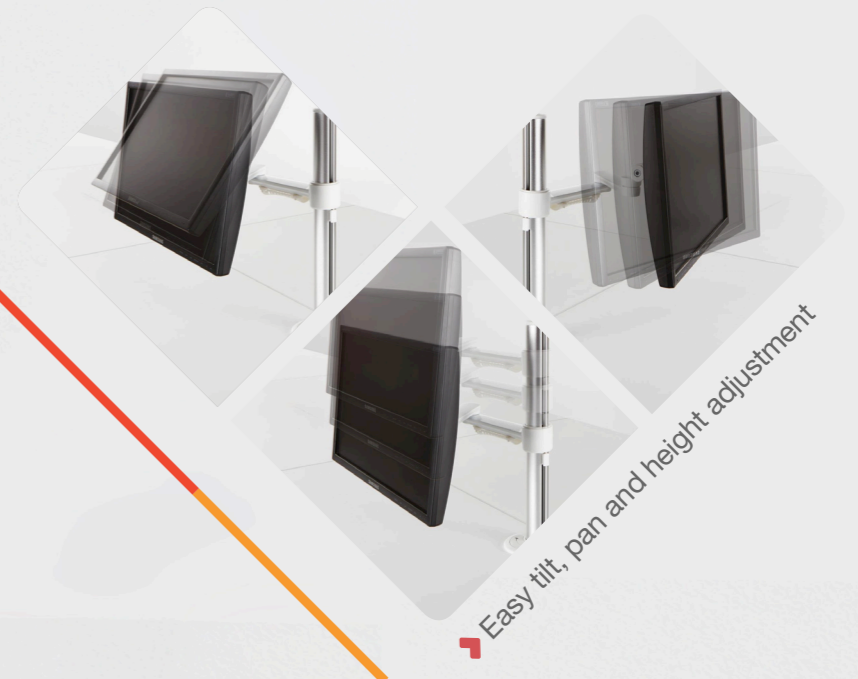
C.ME quad arm

The **C.ME** Monitor Arm is made to the highest quality standards and combines a range of innovative features:

- ▶ Easy and safe push-button mechanism allows the monitor to be adjusted from a seated position
- ▶ Quick release with 90-degree portrait to landscape screen rotation and secure fastening option
- ▶ Elegant, simple design appeal with 3 colour options to suit any work environment
- ▶ Discreet, effective cable management
- ▶ Bolt through or desk clamp mounting included as standard



- ▶ Push button height adjustment
- ▶ Bolt through option
- ▶ Trough desk cable management



▶ Easy tilt, pan and height adjustment



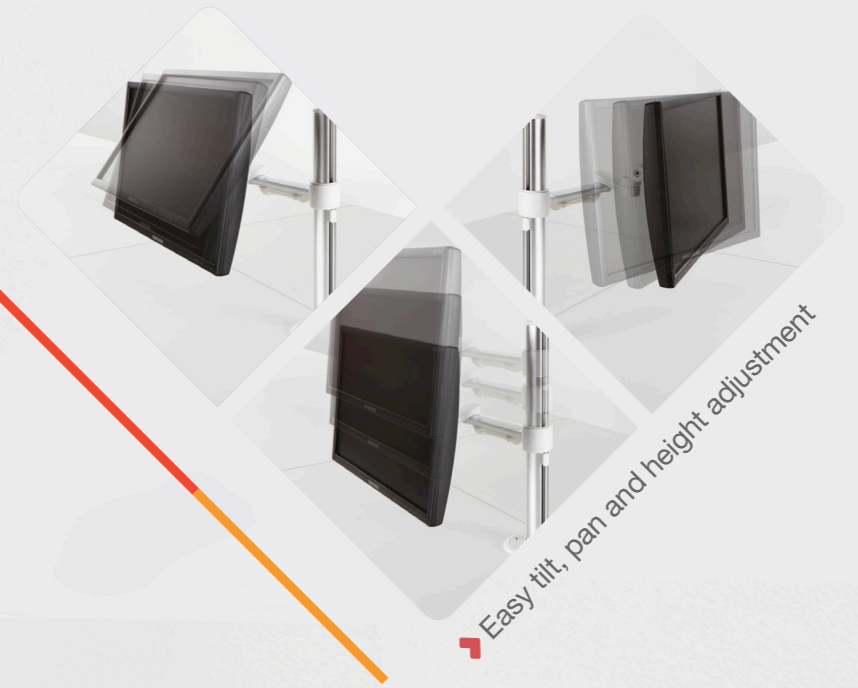
- ▶ Discreet cable management
- ▶ Universal VESA Mount with Quick Release
- ▶ Tension adjustment for screen weight

The **C.ME** Monitor Arm is made to the highest quality standards and combines a range of innovative features:

- ▶ Easy and safe push-button mechanism allows the monitor to be adjusted from a seated position
- ▶ Quick release with 90-degree portrait to landscape screen rotation and secure fastening option
- ▶ Elegant, simple design appeal with 3 colour options to suit any work environment
- ▶ Discreet, effective cable management
- ▶ Bolt through or desk clamp mounting included as standard



- ▶ ¹ Push button height adjustment
- ▶ ² Bolt through option
- ▶ ³ Trough desk cable management

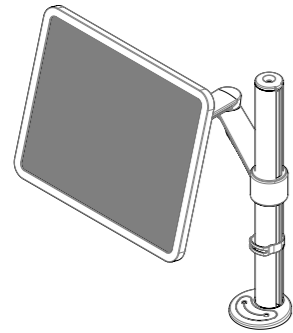


▶ Easy tilt, pan and height adjustment

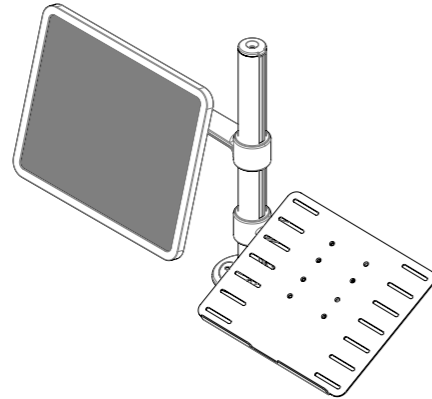


- ▶ ¹ Discreet cable management
- ▶ ² Universal VESA Mount with Quick Release
- ▶ ³ Tension adjustment for screen weight

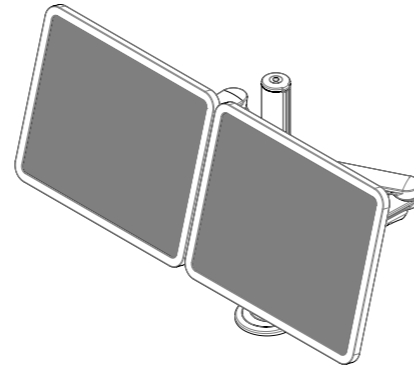
STANDARD HEIGHT



SINGLE ARM

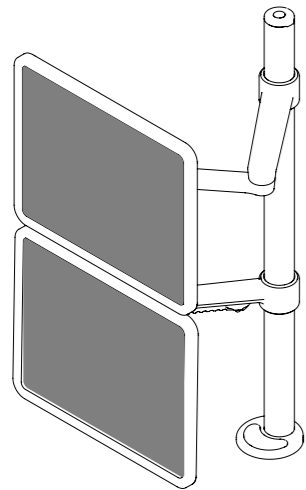


SINGLE ARM + LAPTOP TRAY

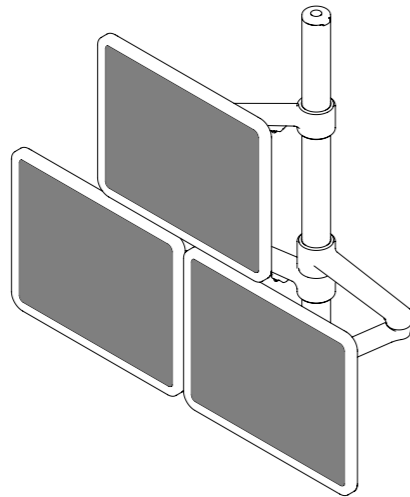


DOUBLE ARM

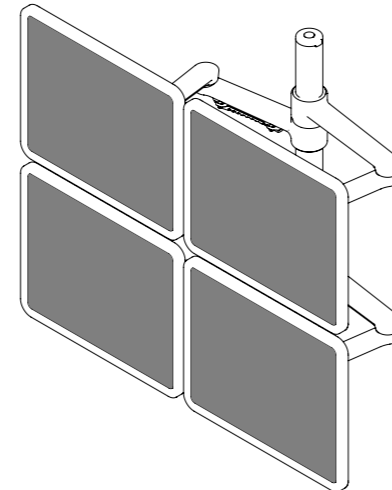
EXTENDED HEIGHT



DOUBLE ARM



TRIPLE ARM

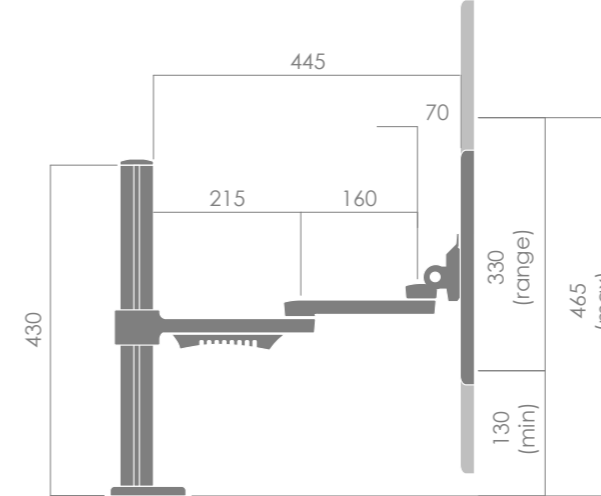


QUAD ARM

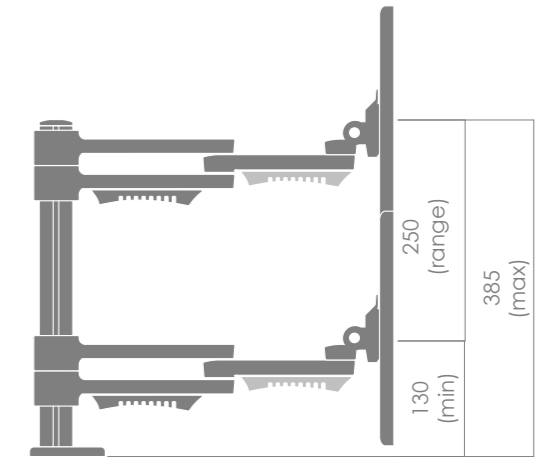
WEIGHT CAPACITY: 8kg (17.6lbs) per Arm
MAX SCREEN WIDTH: **Single:** Unlimited **Double:** 740mm each
HEIGHT ADJUSTMENT: **Single:** 330mm **Double:** 250mm
MONITOR MOUNTING: All VESA compliant monitors (75 or 100mm square)
WORKTOP THICKNESS: **Bolt Through:** 18 – 33mm **Desk Clamp:** 18 – 33mm
LAPTOP TRAY AVAILABLE

OPTIONAL FINISHES
WHITE: Gloss White Arms, Silver Post, White Detailing
BLACK: Matte Black Arms, Black Post, Black Detailing
POLISHED: Polished Arms, Silver Post, Black Detailing

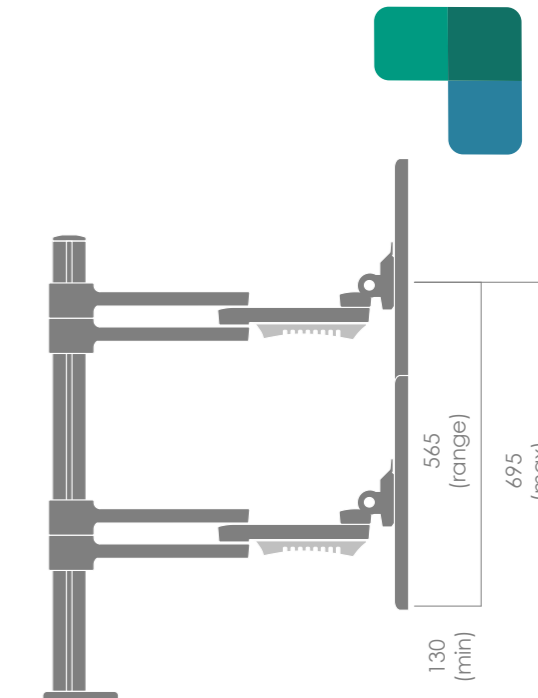
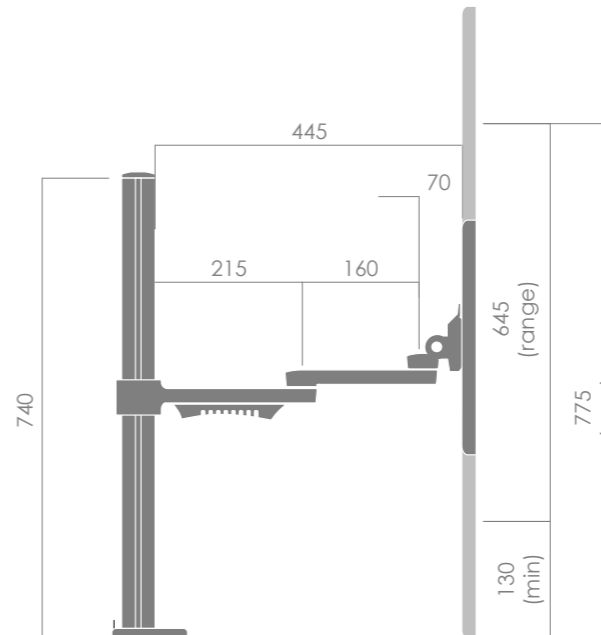
STANDARD HEIGHT



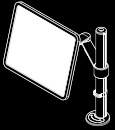
Add-on Arm allows for screens to be mounted at the same height or independantly adjusted
Note: Maximum reach is dependant upon screen size.
 For typical 17" screen, reach is approximately 250mm



EXTENDED HEIGHT



ACCESSORIES



Acting sustainably is what we do. With our beginnings in Australia, since 1984 we have been designing and manufacturing commercial furniture products and components for global work place environments. With sustainability at the core of everything we do, we are dedicated to the reduction of environmental impact from our products and actions.

Because **ThinkingWorks**



ThinkingWorks™
By Thinking Ergonomix

www.thinking.info

Asia, Australia & New Zealand. Europe & United Kingdom.